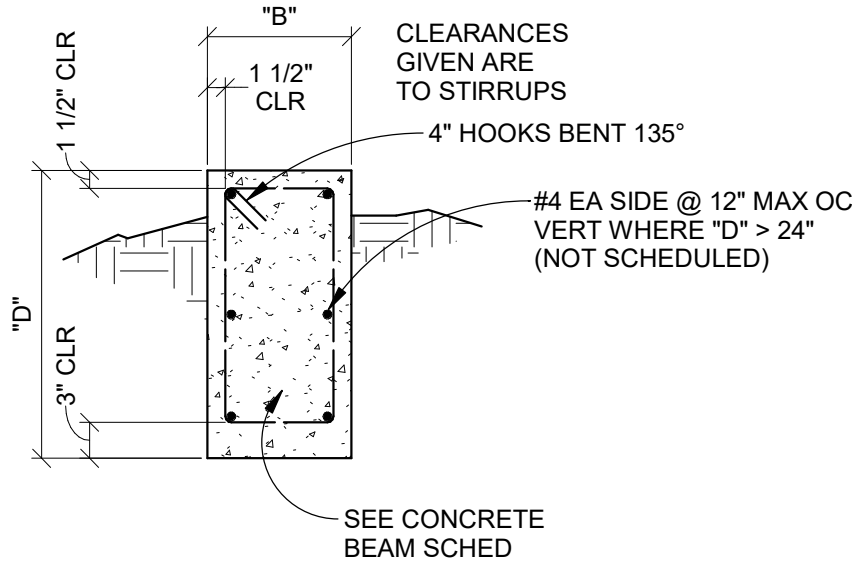
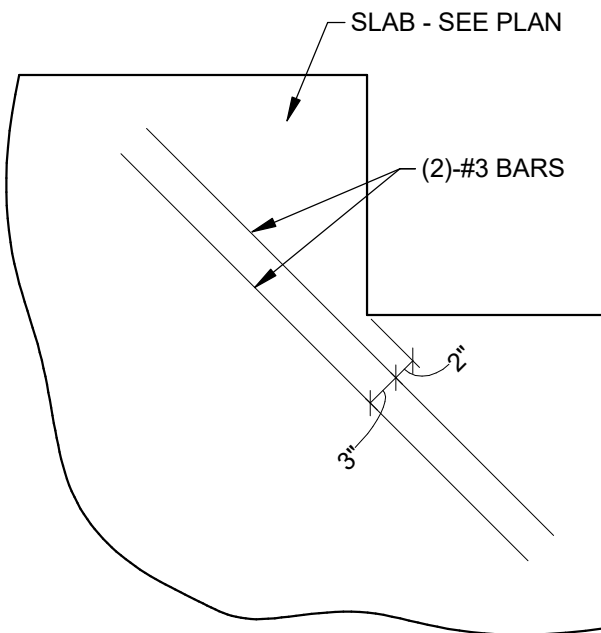


PLAN AT TYPICAL CORNER REINFORCING

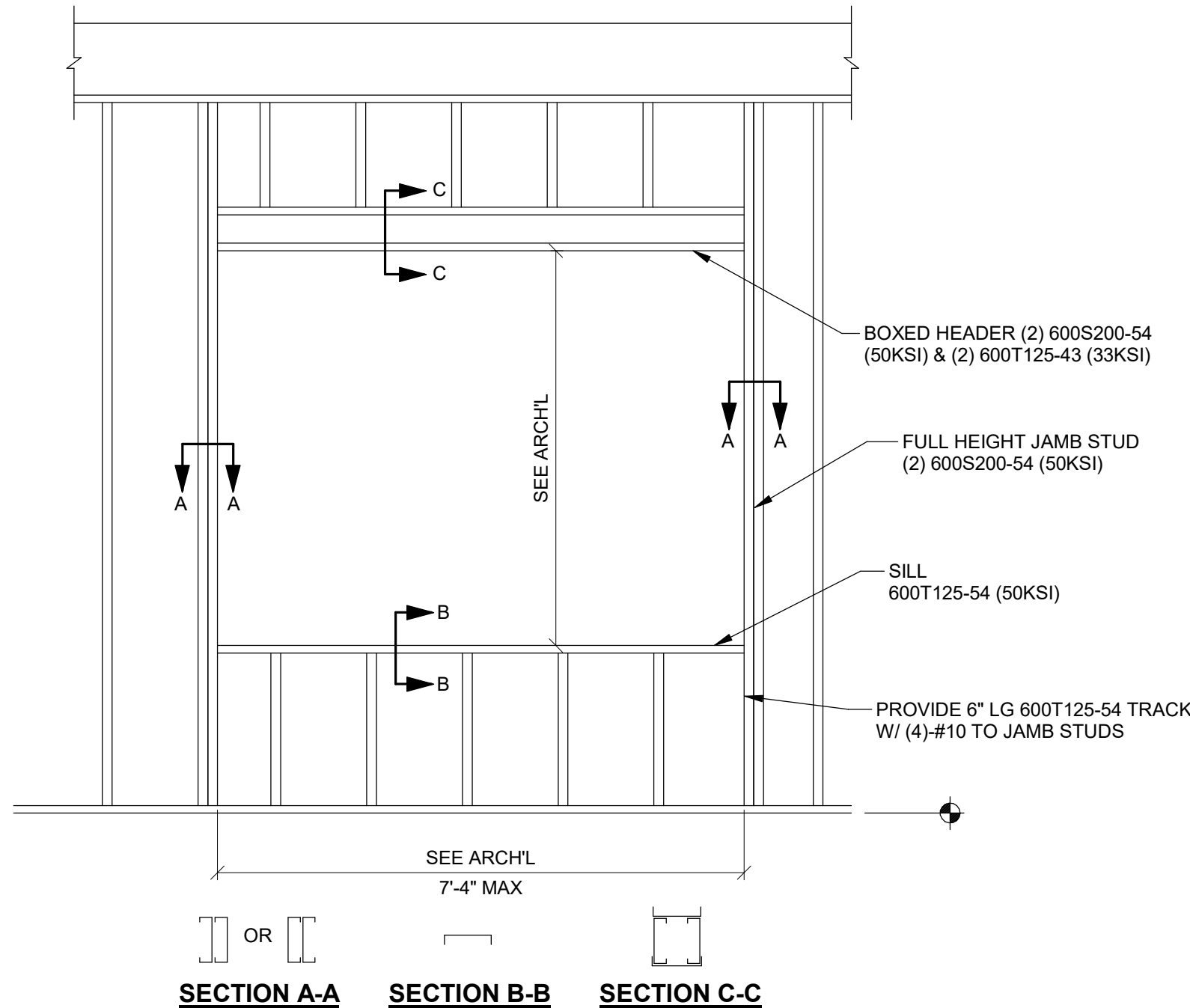
(FOR ALL REINFORCED CONCRETE BEAMS, WALLS AND REINFORCED MASONRY)



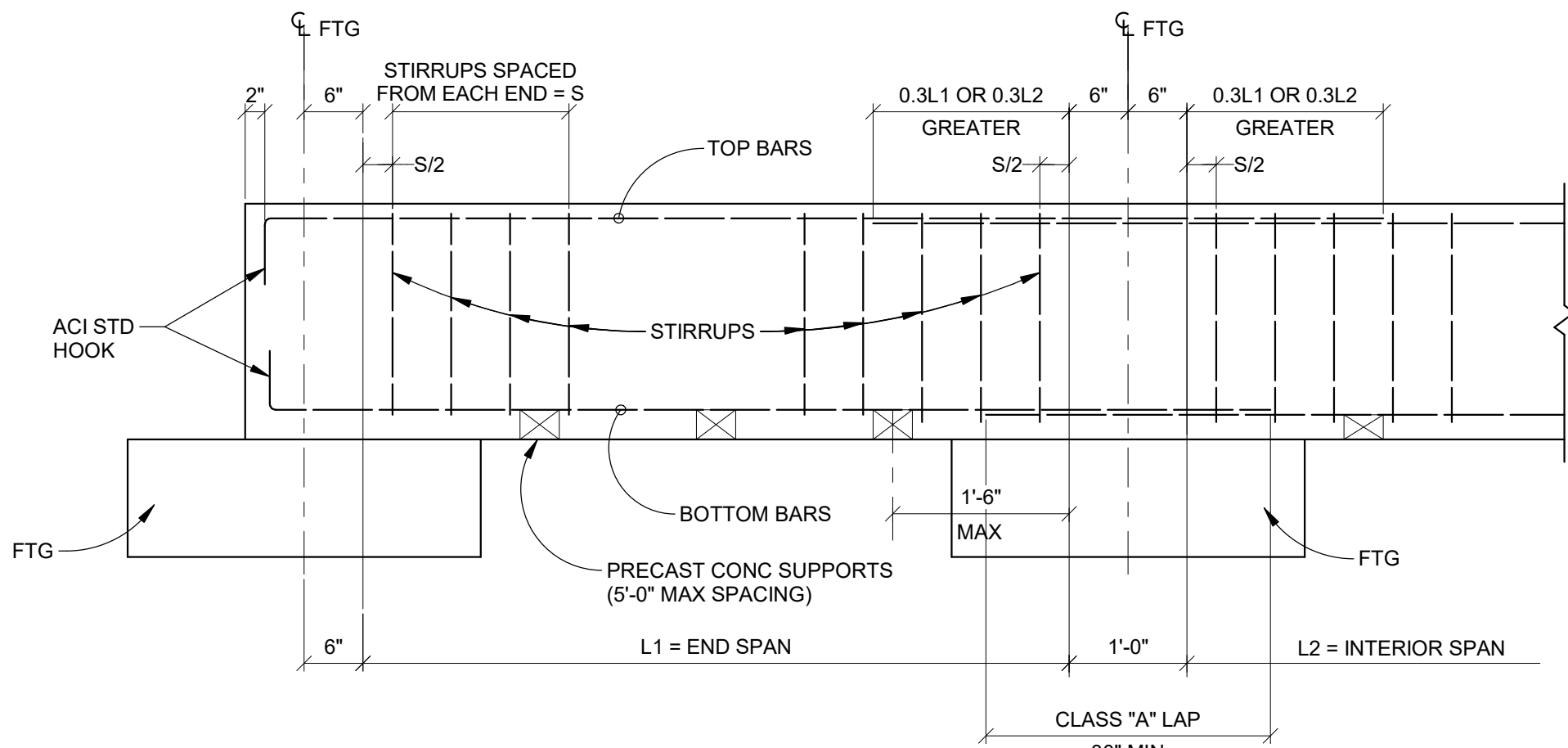
TYPICAL GRADE BEAM



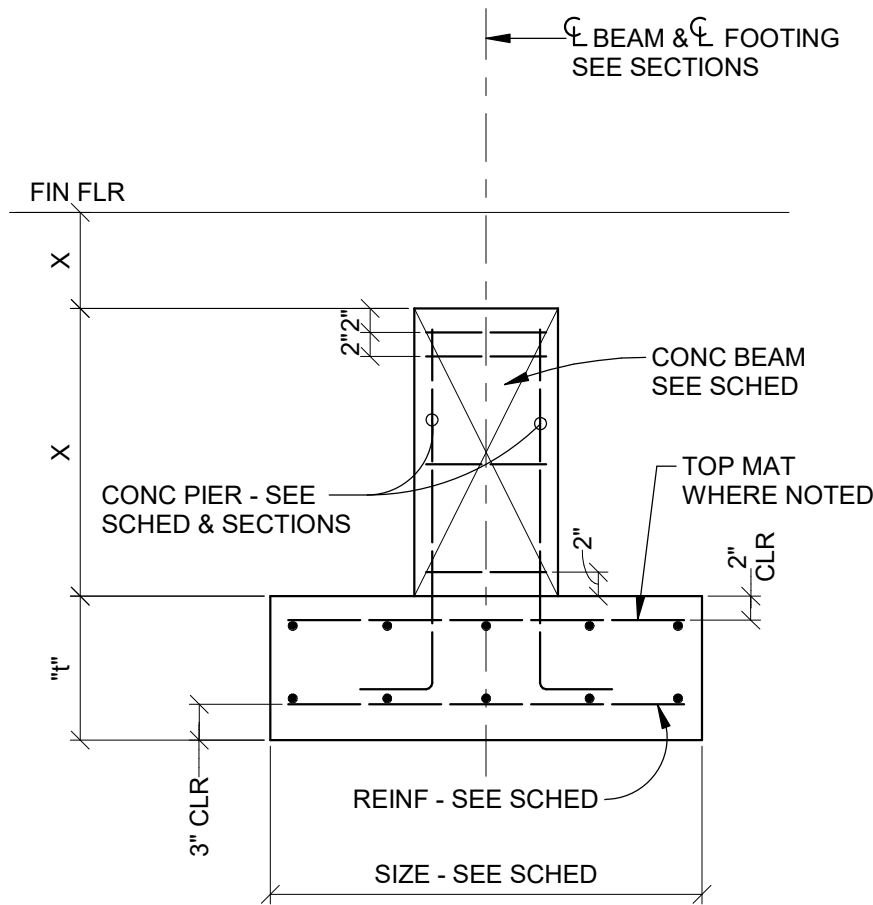
TYPICAL RE-ENTRANT CORNER DETAIL



TYPICAL OPENING ELEVATION

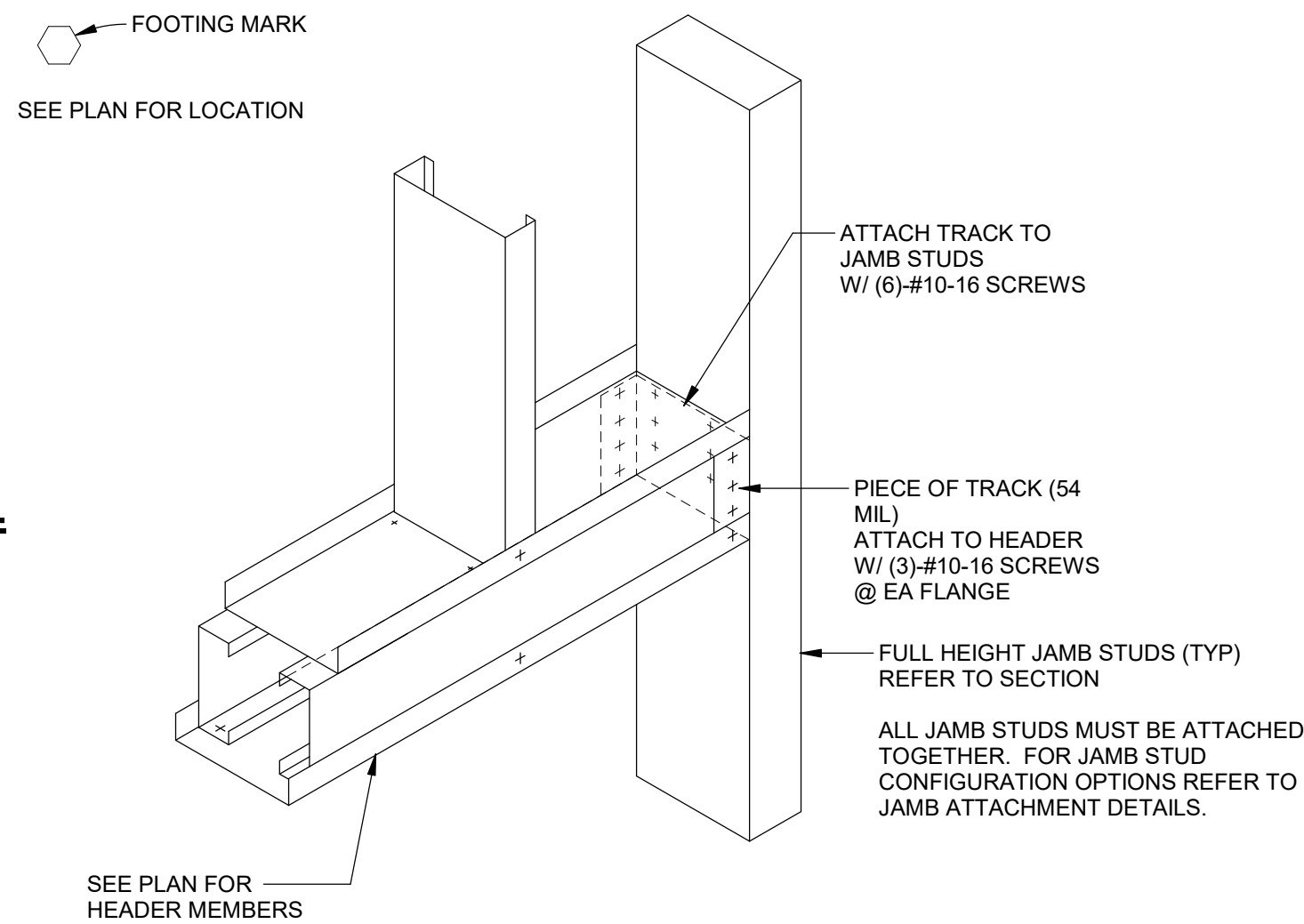


TYPICAL BEAM DETAIL



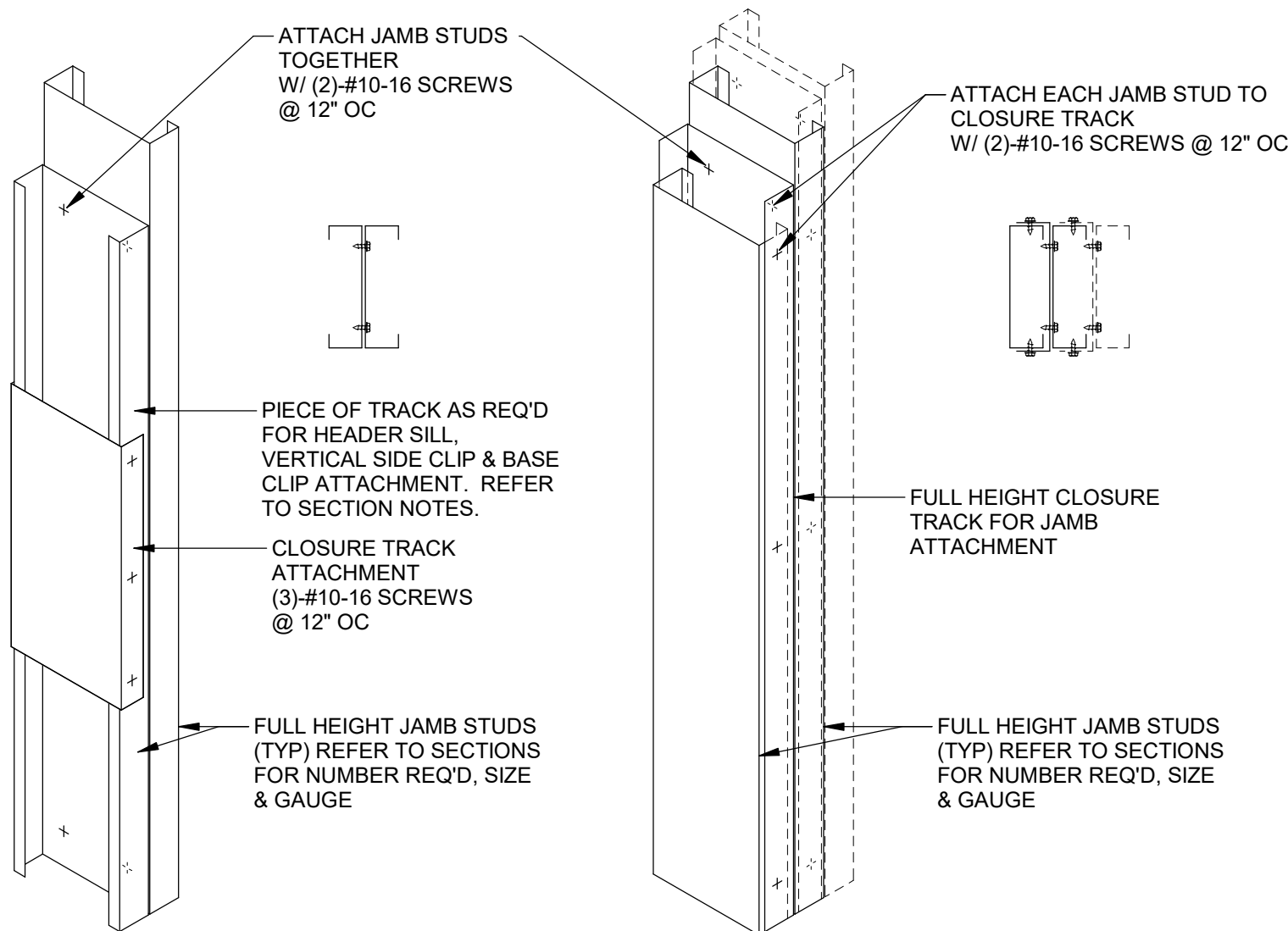
TYPICAL SPREAD FOOTING DETAIL

SPREAD FOOTING SCHEDULE				
MARK	SIZE	"I"	REINF	REMARKS
A	3'-0" x 3'-0"	12"	(4)-#5 EA WAY	
B	4'-0" x 4'-0"	12"	(4)-#5 EA WAY	
C	3'-0" x 3'-0"	24"	(4)-#6 EA WAY	
D	4'-0" x 4'-0"	24"	(4)-#6 EA WAY	
E	5'-0" x 5'-0"	24"	(5)-#6 EA WAY	



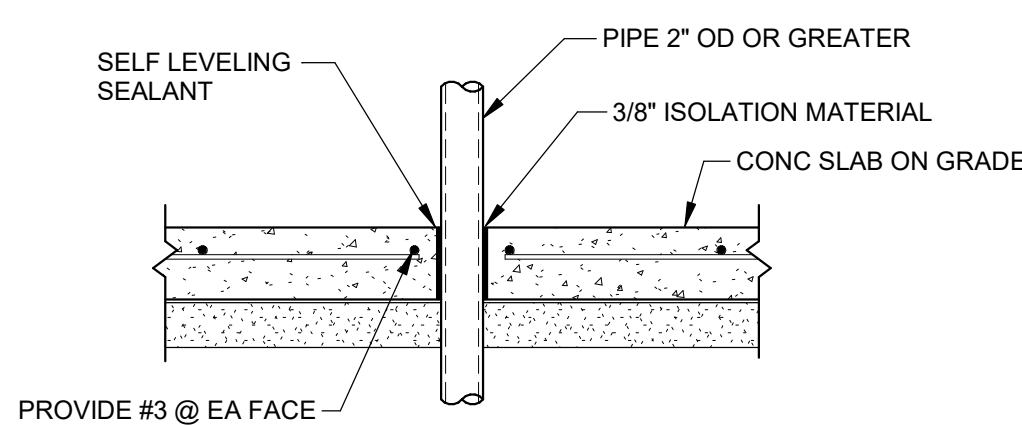
HEADER - JAMB DETAIL

- NOTES:
1. ATTACH HEADER MEMBERS TOGETHER W/ (2)-#10-16 SCREWS @ 12" OC.
 2. ALL HEADER MEMBERS MUST SPAN ENTIRE LENGTH OF OPENING W/O SPLICES.
 3. 1/8" MAX GAP ALLOWED BETWEEN ENDS OF HEADER MEMBERS AND JAMB (TYP).
 4. MEMBERS SHALL NOT BE PUNCHED.

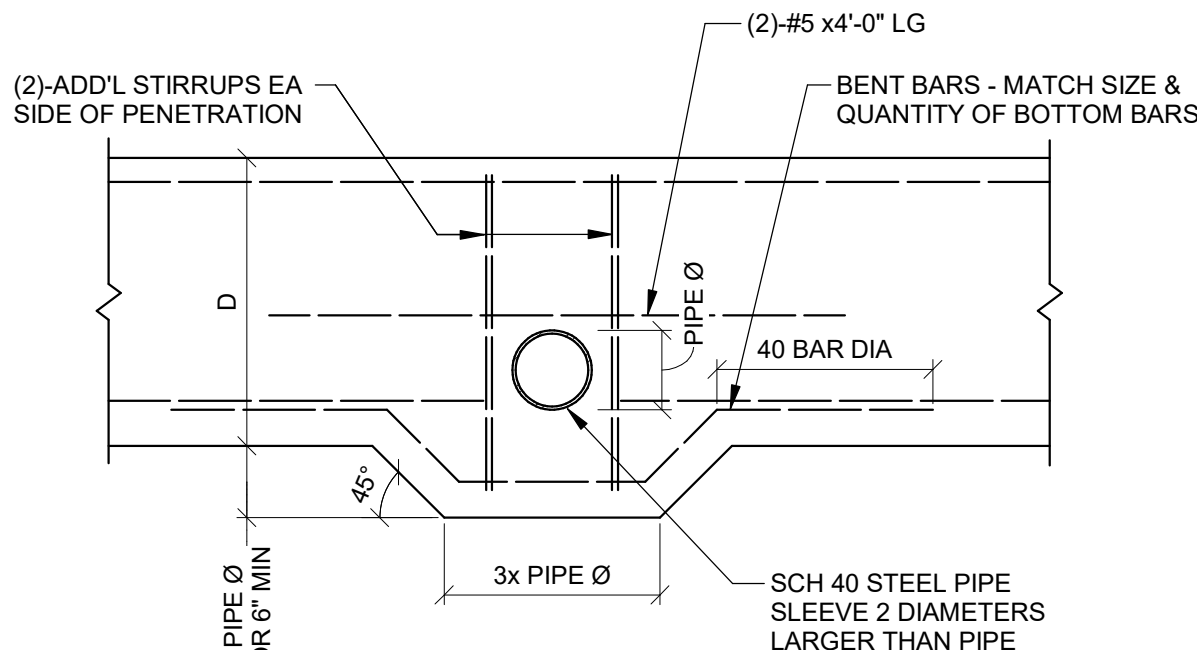


JAMB ATTACHMENT SCREWED OPTION

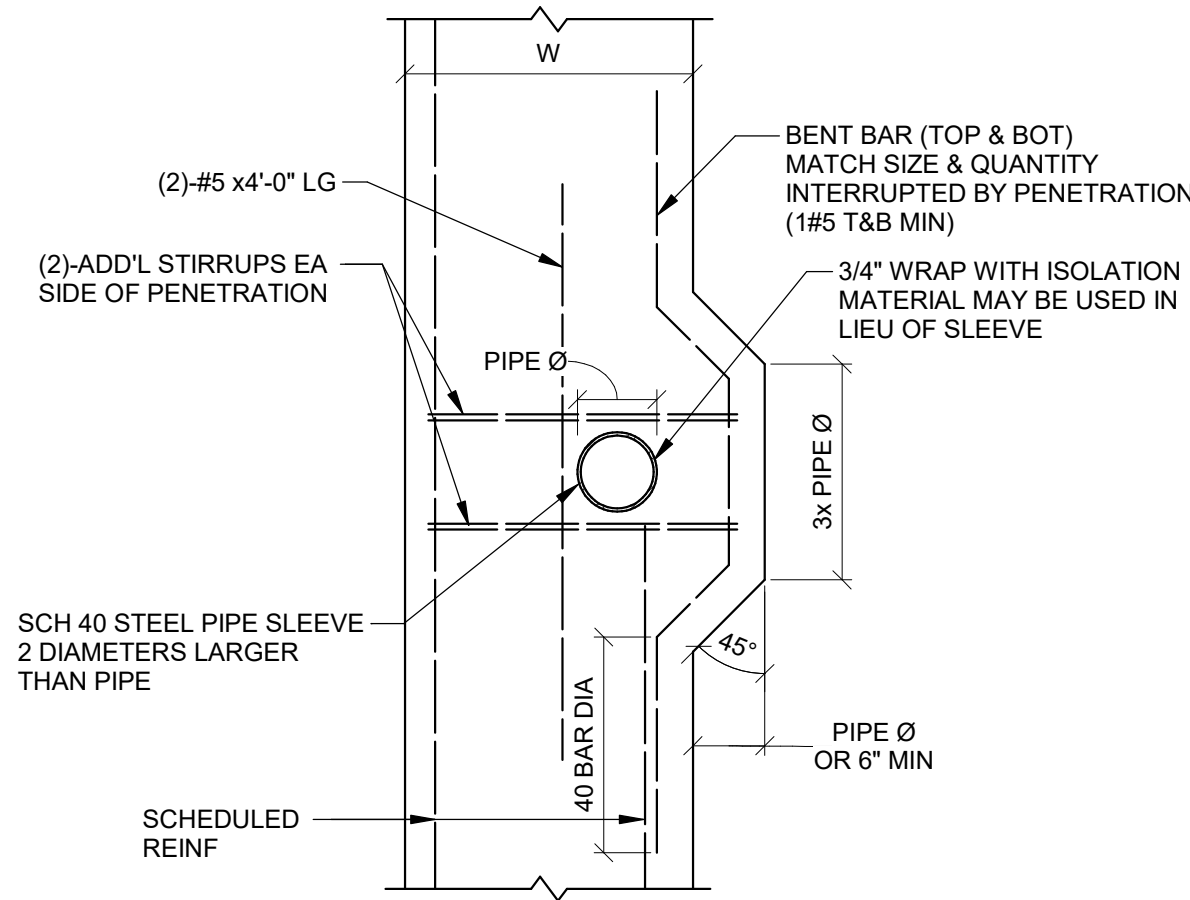
JAMB ATTACHMENT SCREWED OPTION



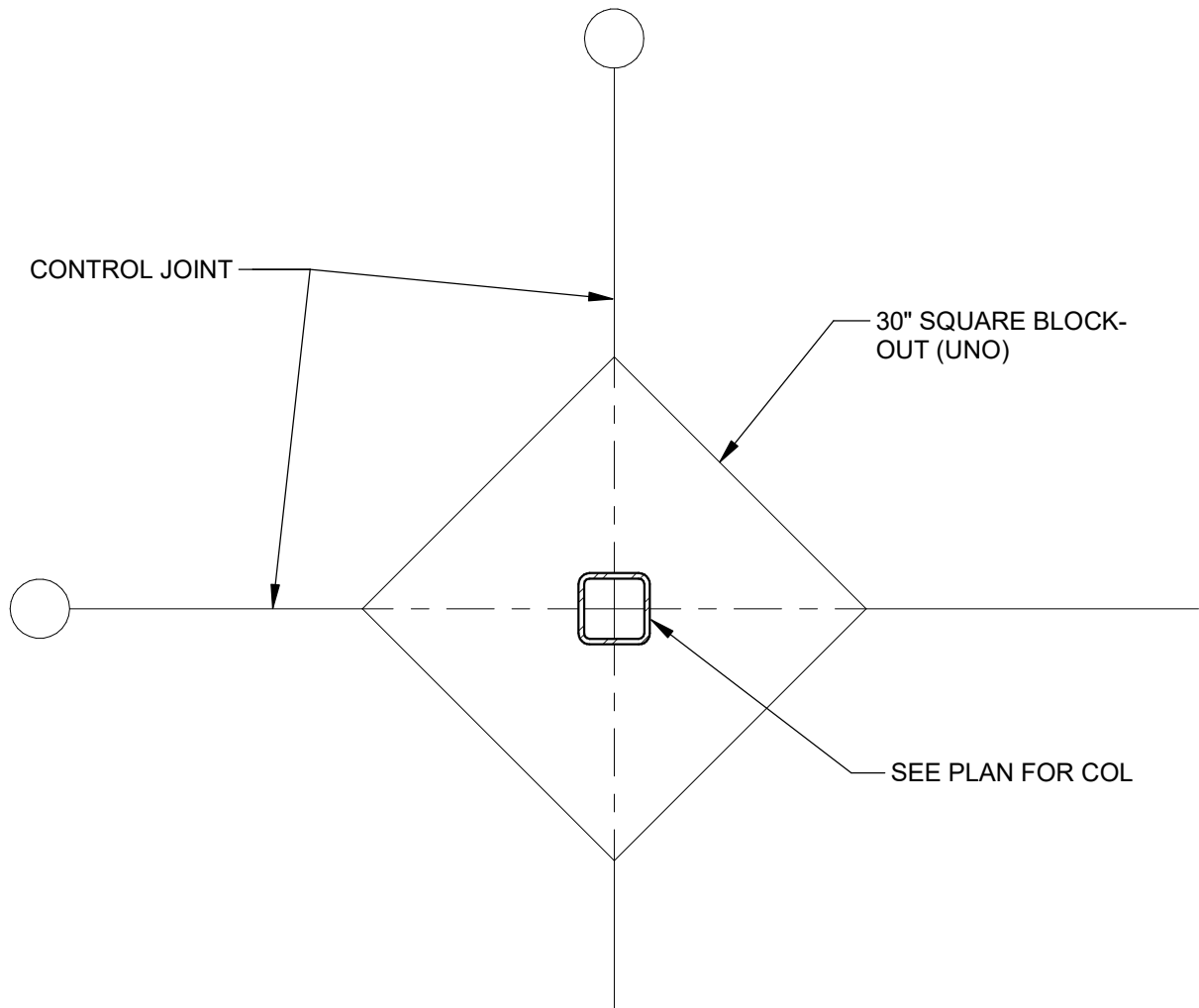
TYPICAL PIPE PENETRATION DETAIL



TYPICAL HORIZONTAL PENETRATION THRU GRADE BEAM

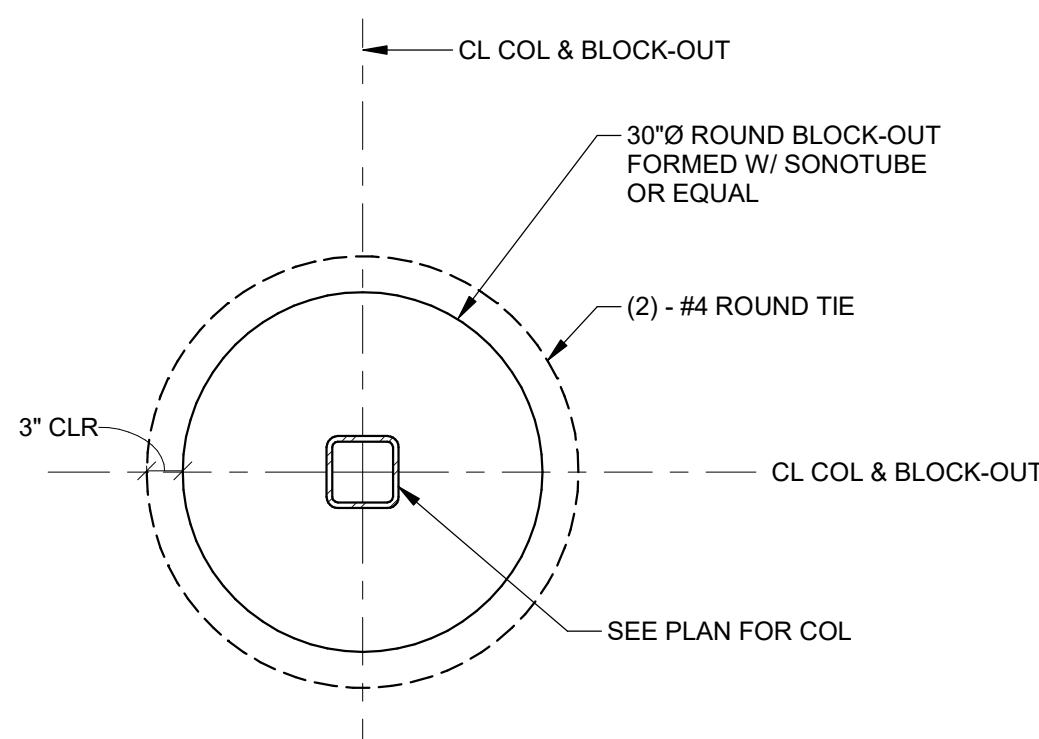


TYPICAL VERTICAL PENETRATION THRU GRADE BEAM



TYPICAL COLUMN BLOCK-OUT DETAIL WHERE CONTROL JOINTS OCCUR (PLAN VIEW)

NOTE: ADJUST SLAB BLOCKOUT DIMENSIONS AS REQ'D TO ACCOMMODATE BASE PLATE SIZE.



TYPICAL COLUMN BLOCK-OUT DETAIL WHERE JOINTS DO NOT INTERSECT (PLAN VIEW)

NOTE: USE SIMILAR CIRCULAR BLOCK-OUT DETAIL AT PERIMETER AND CORNER COLUMNS.

TBA STUDIO
ARCHITECTURE
103 Cypress Street
West Monroe, LA 71291
Tel. 318.340.1550
Fax. 318.998.1315
www.tbastudio.com

TBA

SCHOOL OF CONSTRUCTION PRACTICE
LAB BUILDING, UNIVERSITY OF
LOUISIANA MONROE

507 Filhiol Ave., Monroe, LA 71203

DRAWING REVISIONS

No.	Description	Date

DRAWN BY: JDT

CHECKED BY: JDT

SHEET

S4.03

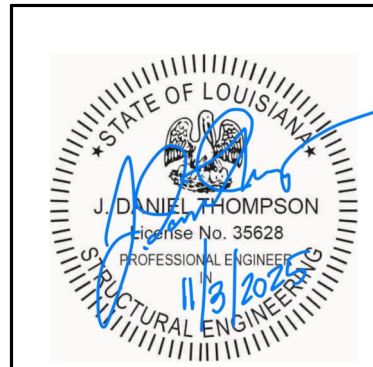
Date: NOV 2025

Project No.: 24-0059

File Name:

DESCRIPTION:

TYPICAL DETAILS



CONSULTING ENGINEERS
3003 KNIGHT STREET, SUITE 120
SHREVEPORT, LOUISIANA 71105
phone: 318-425-7452 fax: 318-425-4622
www.AFJMc.com

ENGINEER: J. DANIEL THOMPSON, PE, SE
LICENSE NO. 35628

THESE DRAWINGS DO NOT INCLUDE NECESSARY COMPONENTS FOR CONSTRUCTION SAFETY 25-033

COPYRIGHT NOTICE:
THIS ENGINEERING DRAWING SHALL BE USED ONLY PURSUANT TO THE AGREEMENT WITH AFJMC. NO OTHER USE, DISSEMINATION OR DUPLICATION MAY BE MADE WITHOUT PRIOR WRITTEN CONSENT OF AFJMC. ALL COMMON LAW RIGHTS OF COPYRIGHT AND OTHERWISE ARE HEREBY SPECIFICALLY RESERVED.